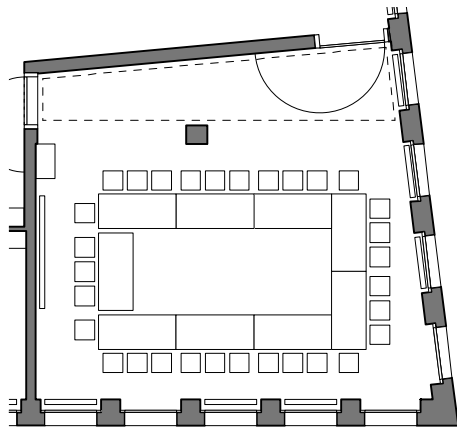
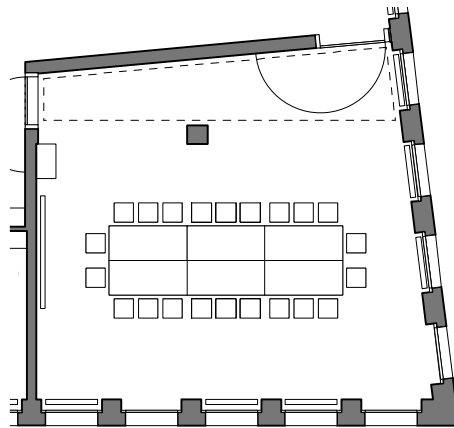


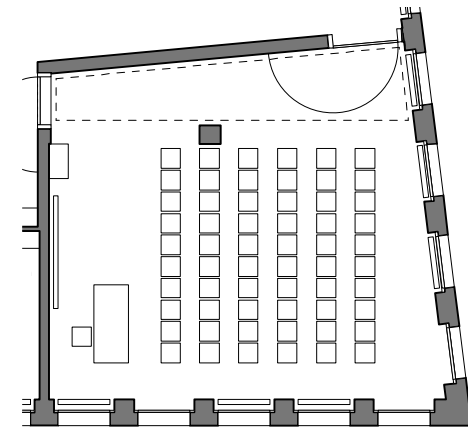
Bestuhlungsvarianten Adrian Frutiger



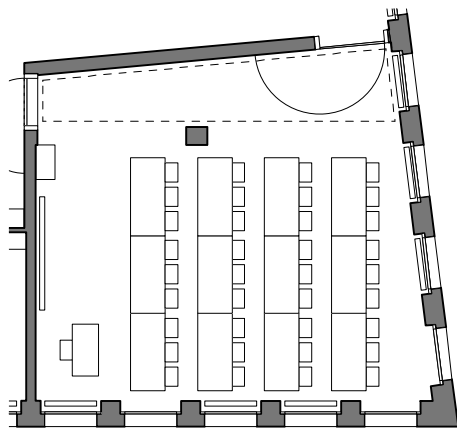
Var. 1 +/- 30 Sitzplätze



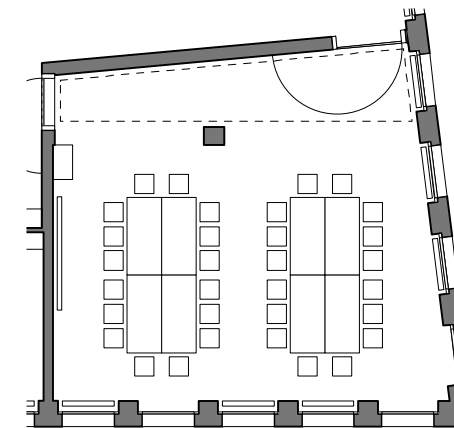
Var. 2 +/- 20 Sitzplätze



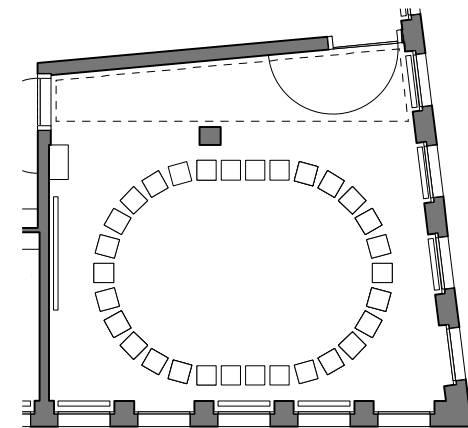
Var. 3 +/- 60 Sitzplätze



Var. 4 +/- 35 Sitzplätze



Var. 5 +/- 30 Sitzplätze



Var. 6 +/- 24 Sitzplätze